

# AQ PRO NEW!



## Handheld Indoor Air Quality Monitor

The Latest in Indoor Air Quality Monitoring & Real-Time Data-Logging for IAQ Analysis in Hospitals, Schools, Labs, Airports, and much more

- Multiple Parameters - Up to 6 Total (Customize UP to 3 Gases)
- REAL-TIME Continuous Data-Logging
- Active Internal Sampling Pump
- Compact Handheld Unit
- Easy to Use Menu System
- PC Software & USB Included
- Large Internal Memory
- Li-Ion Rechargeable Battery
- Barometric Air Pressure
- Protective Magnetic Rubber Boot
- Optional Wireless Printer
- Optional Handheld Probe



CO<sub>2</sub>

CO

% RH

Temp

Barometric Pressure

VOC

Formaldehyde

NO<sub>2</sub>

SO<sub>2</sub>

H<sub>2</sub>S

O<sub>2</sub>

NO

“Built with Quality in Mind”



Real-time Data Logging for Graphs, Data Review, IAQ reports

Wireless Communications with Computer & Remote Printer

Light Weight, Durable, Handheld Design

**E Instruments International**

**www.E-Inst.com**

P: 215-750-1212 F: 215-750-1399 A: 402 Middletown Blvd, Ste 216 Langhorne, PA 19047

# AQ PRO



## Specifications

Parameter	Sensor	Range	Res.	Accuracy
Relative Humidity	TFC	5 - 95%	0.1%	± 2% RH
Ambient Temp.	Pt100	-40 - 257°F (-40 - 125°C)	0.1°C/F	± 0.4°C (0 - 60°C)
Barometric Pressure	Solid State	260 - 1260 mbar	1 mbar	± 2 mbar
Differential Pressure	Bridge	± 40.0 inH <sub>2</sub> O (±100.0 mbar)	0.1 inH <sub>2</sub> O (0.25 mbar)	±1% rdg.
Temperature Type K T1	Tc K	0 - 2000°F (0 - 1100°C)	1°C/F	5°F (3°C) or 2% of rdg
Electromagnetic Compatibility	EN 61326-1, Portable Equipment			

## AQ PRO ORDERING CODE

Part #: PRO - \_\_\_ - \_\_\_ - \_\_\_

Example: Part #: PRO - C2 - C - H = CO<sub>2</sub>, CO, & H<sub>2</sub>S

### ALL AQ PRO Kits Include:

- Temperature, % Relative Humidity
- Barometric Pressure
- PC Software & USB Cable
- Bluetooth Connectivity
- Protective Carrying Case
- Continuous Active Internal Sampling Pump
- Differential Pressure
- Operating Manual
- Li-Ion Battery & AC Charger
- Factory Calibration Certificate

### Select up to 3 Gases from Group 1 and/or Group 2:

#### Group 1 (Choose Up To ANY 3)

Parameter	Sensor	Range	Res.	Accuracy
<b>C2</b> - *Carbon Dioxide (CO <sub>2</sub> )	NDIR	0 - 5,000 ppm	1 ppm	± 2% rdg. ± 10 ppm
<b>O</b> - Oxygen (O <sub>2</sub> )	EC**	0 - 25%	0.1%	± 0.1% vol
<b>V</b> - Volatile Organic Compounds (VOCs)	PID	0 - 20 ppm (0 - 46 mg/m <sup>3</sup> )	1 ppb (2.3 µg/m <sup>3</sup> )	10% rdg. ± 20 ppb

#### Group 2 (Choose Up To ANY 2)

<b>C</b> - *Carbon Monoxide (CO)	EC**	0 - 200 ppm	0.1 ppm	± 1 ppm rdg. ± 0.2 ppm
<b>F</b> - ***Formaldehyde (CH <sub>2</sub> O)	EC**	0 - 10 ppm	10 ppb	2% ± 30 ppb
<b>H</b> - Hydrogen Sulfide (H <sub>2</sub> S)	EC**	0 - 100 ppm	1 ppm	± 4% of rdg. ± 0.5 ppm
<b>X</b> - *Nitric Oxide (NO)	EC**	0 - 250 ppm	0.1 ppm	± 2 ppm of rdg.
<b>N</b> - *Nitrogen Dioxide (NO <sub>2</sub> )	EC**	0 - 20 ppm	0.1 ppm	± 0.5 ppm of rdg.
<b>S</b> - *Sulfur Dioxide (SO <sub>2</sub> )	EC**	0 - 20 ppm	0.1 ppm	± 0.5 ppm of rdg.

\* Other Ranges are Available Upon Request    \*\* Electrochemical    \*\*\* Accuracy Based on Laboratory Conditions

## Optional Accessories



Wireless Bluetooth™ Printer



Sampling Probe



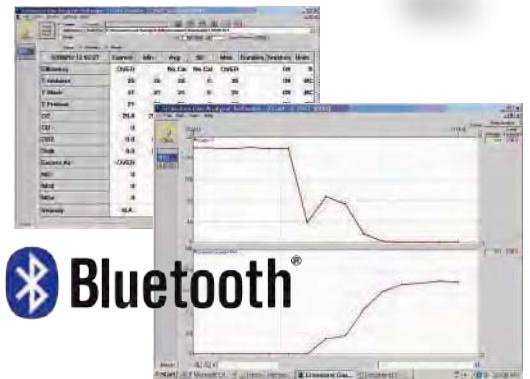
Pitot Tube



Carrying Case

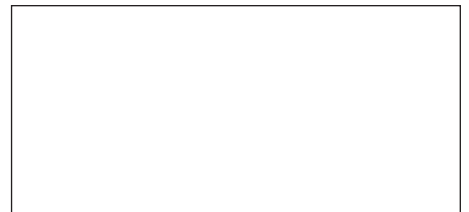


CH<sub>2</sub>O      CO  
O<sub>2</sub>  
CO<sub>2</sub>      NO<sub>2</sub>      % RH  
VOC      SO<sub>2</sub>  
H<sub>2</sub>S



AQ Gas® Real-time Datalogging Software

### Distributed By:



E Instruments International

www.E-Inst.com

P: 215-750-1212 F: 215-750-1399 A: 402 Middletown Blvd, Ste 216 Langhorne, PA 19047